

Pop-Facts Demographics - Pop-Facts Census Demographic Overview

Title Page

Data Version: 2018 Feb (Internal)

Report Generation Method: Single

Analysis Area: 1789 STATE ST, SAN DIEGO, CA, 92101-2530

Reporting Detail: As Selected

Include Map: Yes

Include Labels: Yes

Map Reporting Detail: As Selected

Base Map Style: Claritas Map

Subtotal Method: None

Include Charts: Yes

Analysis Area Detail: No

Report Sections:

Pop-Facts Summary

Pop-Facts Census Demographic Overview

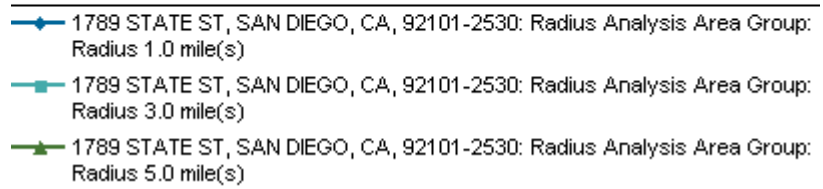
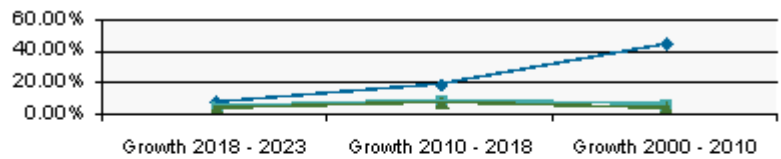
Pop-Facts Demographics - Pop-Facts Census Demographic Overview

Description	1789 STATE ST, SAN DIEGO, CA, 92101-2530: Radius Analysis Area Group: Radius 1.0 mile(s)		1789 STATE ST, SAN DIEGO, CA, 92101-2530: Radius Analysis Area Group: Radius 3.0 mile(s)		1789 STATE ST, SAN DIEGO, CA, 92101-2530: Radius Analysis Area Group: Radius 5.0 mile(s)	
	Total	%	Total	%	Total	%

Pop-Facts Summary

Population

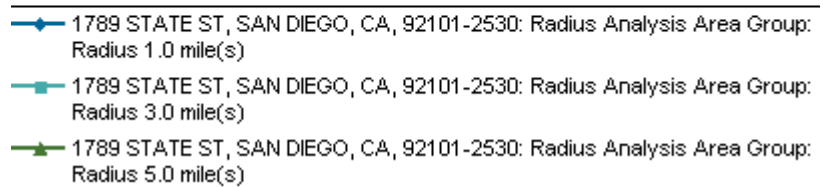
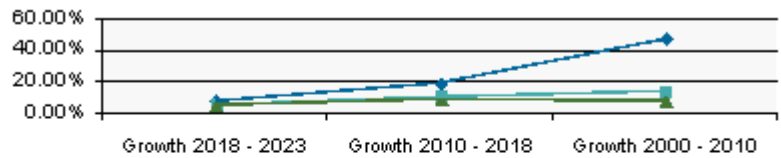
2023 Projection	38,179	194,036	507,659
2018 Estimate	35,486	185,434	488,261
2010 Census	29,911	170,244	455,072
2000 Census	20,732	160,452	437,088



Growth 2018 - 2023	7.59%	4.64%	3.97%
Growth 2010 - 2018	18.64%	8.92%	7.29%
Growth 2000 - 2010	44.27%	6.10%	4.11%

Households

2023 Projection	21,630	92,232	199,230
2018 Estimate	20,043	87,578	190,343
2010 Census	16,895	79,353	175,093
2000 Census	11,497	70,091	163,168



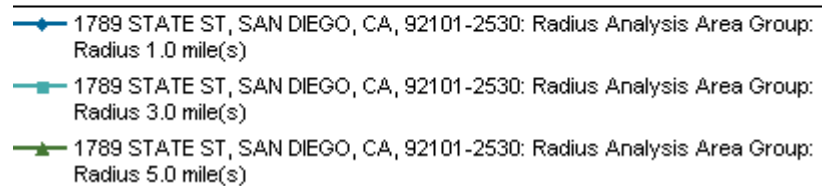
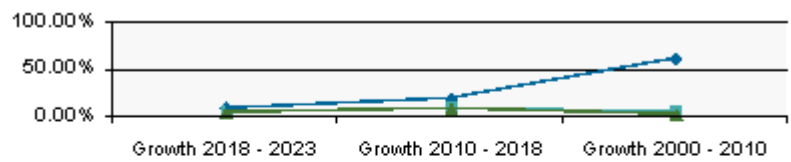
Growth 2018 - 2023	7.91%	5.31%	4.67%
Growth 2010 - 2018	18.63%	10.37%	8.71%

Pop-Facts Demographics - Pop-Facts Census Demographic Overview

Description	1789 STATE ST, SAN DIEGO, CA, 92101-2530: Radius Analysis Area Group: Radius 1.0 mile(s)		1789 STATE ST, SAN DIEGO, CA, 92101-2530: Radius Analysis Area Group: Radius 3.0 mile(s)		1789 STATE ST, SAN DIEGO, CA, 92101-2530: Radius Analysis Area Group: Radius 5.0 mile(s)	
	Total	%	Total	%	Total	%
Growth 2000 - 2010		46.95%		13.21%		7.31%

Family Households

2023 Projection	5,044	33,339	95,761
2018 Estimate	4,675	31,833	91,907
2010 Census	3,937	29,295	85,652
2000 Census	2,447	28,033	84,263



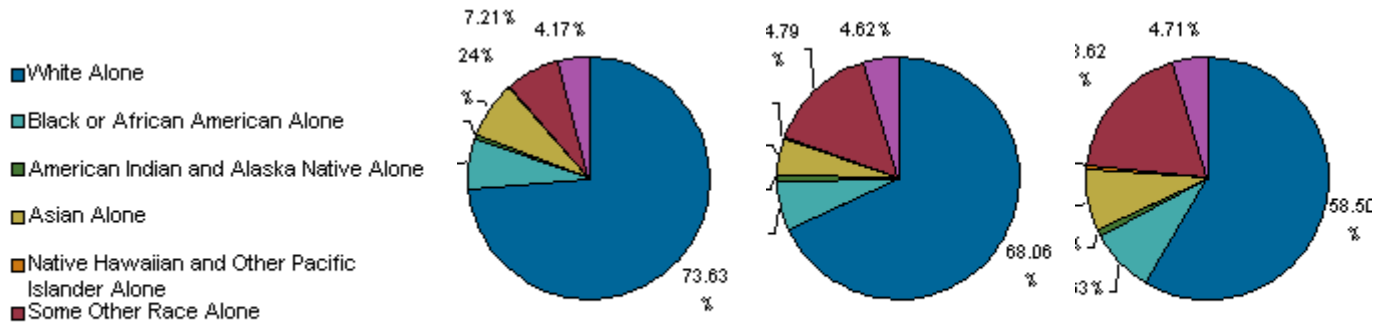
Growth 2018 - 2023		7.89%	4.73%	4.19%
Growth 2010 - 2018		18.76%	8.66%	7.30%
Growth 2000 - 2010		60.86%	4.50%	1.65%

Pop-Facts Demographics - Pop-Facts Census Demographic Overview

Description	1789 STATE ST, SAN DIEGO, CA, 92101-2530: Radius Analysis Area Group: Radius 1.0 mile(s)		1789 STATE ST, SAN DIEGO, CA, 92101-2530: Radius Analysis Area Group: Radius 3.0 mile(s)		1789 STATE ST, SAN DIEGO, CA, 92101-2530: Radius Analysis Area Group: Radius 5.0 mile(s)	
	Total	%	Total	%	Total	%

Pop-Facts Census Demographic Overview

2010 Pop by Single Race Classification	29,911	170,244	455,072
--	--------	---------	---------

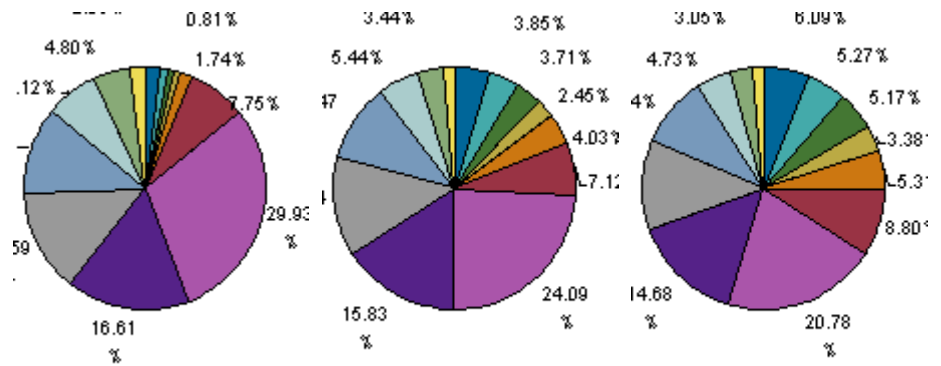


White Alone	22,024	73.63%	115,876	68.06%	266,209	58.50%
Black or African American Alone	1,989	6.65%	11,081	6.51%	39,261	8.63%
American Indian and Alaska Native Alone	201	0.67%	1,376	0.81%	3,770	0.83%
Asian Alone	2,221	7.42%	8,364	4.91%	37,770	8.30%
Native Hawaiian and Other Pacific Islander Alone	72	0.24%	505	0.30%	1,920	0.42%
Some Other Race Alone	2,157	7.21%	25,174	14.79%	84,723	18.62%
Two or More Races	1,247	4.17%	7,868	4.62%	21,419	4.71%
2010 Population by Ethnicity	29,911		170,244		455,072	
Hispanic or Latino	5,804	19.41%	55,296	32.48%	173,761	38.18%
Not Hispanic or Latino	24,106	80.59%	114,948	67.52%	281,311	61.82%
2010 Hispanic or Latino Pop by Single-Class. Race	5,804		55,296		173,761	
White Alone	3,119	53.73%	25,411	45.95%	74,736	43.01%
Black or African American Alone	86	1.48%	787	1.42%	2,599	1.50%
American Indian and Alaska Native Alone	73	1.25%	680	1.23%	2,128	1.22%
Asian Alone	47	0.81%	376	0.68%	1,073	0.62%
Native Hawaiian and Other Pacific Islander Alone	8	0.14%	65	0.12%	248	0.14%
Some Other Race Alone	2,070	35.67%	24,751	44.76%	83,552	48.08%
Two or More Races	402	6.92%	3,226	5.83%	9,424	5.42%
2010 Population by Sex	29,911		170,244		455,072	
Male	17,394	58.15%	92,124	54.11%	240,363	52.82%
Female	12,516	41.85%	78,120	45.89%	214,708	47.18%
Male/Female Ratio	1.39		1.18		1.12	
2010 Population by Age	29,911		170,244		455,072	

Pop-Facts Demographics - Pop-Facts Census Demographic Overview

Description	1789 STATE ST, SAN DIEGO, CA, 92101-2530: Radius Analysis Area Group: Radius 1.0 mile(s)		1789 STATE ST, SAN DIEGO, CA, 92101-2530: Radius Analysis Area Group: Radius 3.0 mile(s)		1789 STATE ST, SAN DIEGO, CA, 92101-2530: Radius Analysis Area Group: Radius 5.0 mile(s)	
	Total	%	Total	%	Total	%

- Age 0 - 4
- Age 5 - 9
- Age 10 - 14
- Age 15 - 17
- Age 18 - 20
- Age 21 - 24
- Age 25 - 34
- Age 35 - 44
- Age 45 - 54
- Age 55 - 64
- Age 65 - 74
- Age 75 - 84
- Age 85 and over

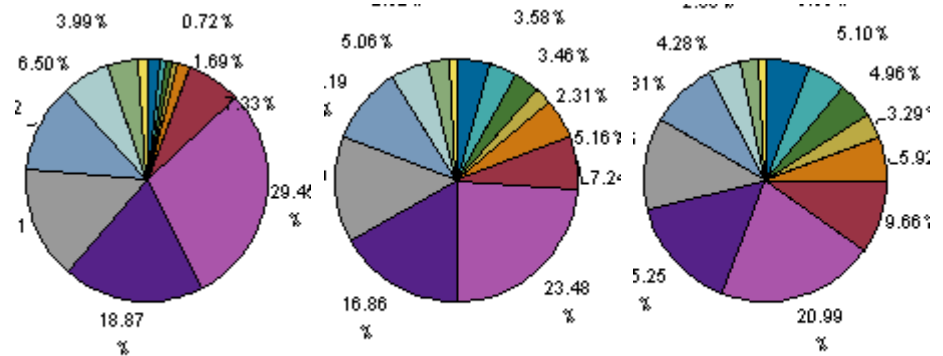


Age 0 - 4	584	1.95%	8,201	4.82%	27,705	6.09%
Age 5 - 9	313	1.05%	6,560	3.85%	23,997	5.27%
Age 10 - 14	242	0.81%	6,320	3.71%	23,525	5.17%
Age 15 - 17	243	0.81%	4,163	2.45%	15,393	3.38%
Age 18 - 20	521	1.74%	6,857	4.03%	24,177	5.31%
Age 21 - 24	2,318	7.75%	12,115	7.12%	40,037	8.80%
Age 25 - 34	8,953	29.93%	41,006	24.09%	94,576	20.78%
Age 35 - 44	4,970	16.61%	26,942	15.83%	66,814	14.68%
Age 45 - 54	4,065	13.59%	22,536	13.24%	55,103	12.11%
Age 55 - 64	3,527	11.79%	17,826	10.47%	42,070	9.24%
Age 65 - 74	2,129	7.12%	9,262	5.44%	21,506	4.73%
Age 75 - 84	1,436	4.80%	5,850	3.44%	13,861	3.05%
Age 85 and over	612	2.05%	2,607	1.53%	6,309	1.39%
Age 16 and over	28,706	95.97%	147,866	86.86%	374,882	82.38%
Age 18 and over	28,529	95.38%	145,000	85.17%	364,452	80.09%
Age 21 and over	28,009	93.64%	138,143	81.14%	340,275	74.77%
Age 65 and over	4,176	13.96%	17,718	10.41%	41,676	9.16%
2010 Median Age	38.6		35.0		32.7	
2010 Male Population by Age	17,394		92,124		240,363	

Pop-Facts Demographics - Pop-Facts Census Demographic Overview

Description	1789 STATE ST, SAN DIEGO, CA, 92101-2530: Radius Analysis Area Group: Radius 1.0 mile(s)		1789 STATE ST, SAN DIEGO, CA, 92101-2530: Radius Analysis Area Group: Radius 3.0 mile(s)		1789 STATE ST, SAN DIEGO, CA, 92101-2530: Radius Analysis Area Group: Radius 5.0 mile(s)	
	Total	%	Total	%	Total	%

- Age 0 - 4
- Age 5 - 9
- Age 10 - 14
- Age 15 - 17
- Age 18 - 20
- Age 21 - 24
- Age 25 - 34
- Age 35 - 44
- Age 45 - 54
- Age 55 - 64
- Age 65 - 74
- Age 75 - 84
- Age 85 and over

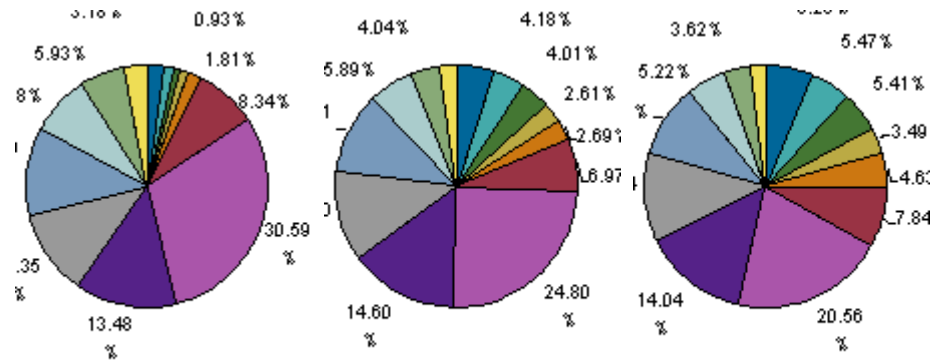


Age 0 - 4	301	1.73%	4,200	4.56%	14,263	5.93%
Age 5 - 9	151	0.87%	3,298	3.58%	12,250	5.10%
Age 10 - 14	119	0.69%	3,190	3.46%	11,919	4.96%
Age 15 - 17	126	0.72%	2,126	2.31%	7,903	3.29%
Age 18 - 20	295	1.69%	4,753	5.16%	14,226	5.92%
Age 21 - 24	1,275	7.33%	6,668	7.24%	23,211	9.66%
Age 25 - 34	5,124	29.45%	21,633	23.48%	50,442	20.99%
Age 35 - 44	3,282	18.87%	15,535	16.86%	36,659	15.25%
Age 45 - 54	2,645	15.21%	13,084	14.20%	29,692	12.35%
Age 55 - 64	2,039	11.72%	9,384	10.19%	21,169	8.81%
Age 65 - 74	1,130	6.50%	4,657	5.06%	10,288	4.28%
Age 75 - 84	694	3.99%	2,690	2.92%	6,079	2.53%
Age 85 and over	214	1.23%	907	0.98%	2,262	0.94%
2010 Median Age, Male	39.0		35.1		32.2	
2010 Female Population by Age	12,516		78,120		214,708	

Pop-Facts Demographics - Pop-Facts Census Demographic Overview

Description	1789 STATE ST, SAN DIEGO, CA, 92101-2530: Radius Analysis Area Group: Radius 1.0 mile(s)		1789 STATE ST, SAN DIEGO, CA, 92101-2530: Radius Analysis Area Group: Radius 3.0 mile(s)		1789 STATE ST, SAN DIEGO, CA, 92101-2530: Radius Analysis Area Group: Radius 5.0 mile(s)	
	Total	%	Total	%	Total	%

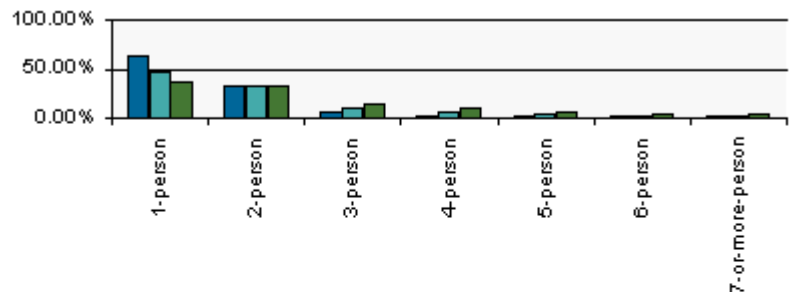
- Age 0 - 4
- Age 5 - 9
- Age 10 - 14
- Age 15 - 17
- Age 18 - 20
- Age 21 - 24
- Age 25 - 34
- Age 35 - 44
- Age 45 - 54
- Age 55 - 64
- Age 65 - 74
- Age 75 - 84
- Age 85 and over



Age 0 - 4	283	2.26%	4,002	5.12%	13,442	6.26%
Age 5 - 9	161	1.29%	3,262	4.18%	11,747	5.47%
Age 10 - 14	123	0.98%	3,131	4.01%	11,606	5.41%
Age 15 - 17	117	0.93%	2,037	2.61%	7,490	3.49%
Age 18 - 20	226	1.81%	2,104	2.69%	9,951	4.63%
Age 21 - 24	1,043	8.34%	5,447	6.97%	16,825	7.84%
Age 25 - 34	3,829	30.59%	19,373	24.80%	44,135	20.56%
Age 35 - 44	1,687	13.48%	11,407	14.60%	30,155	14.04%
Age 45 - 54	1,420	11.35%	9,452	12.10%	25,411	11.84%
Age 55 - 64	1,488	11.89%	8,442	10.81%	20,901	9.73%
Age 65 - 74	999	7.98%	4,605	5.89%	11,218	5.22%
Age 75 - 84	742	5.93%	3,159	4.04%	7,782	3.62%
Age 85 and over	398	3.18%	1,700	2.18%	4,047	1.88%
2010 Median Age, Female	37.8		34.8		33.2	
2010 Households by Household Type	16,895		79,353		175,093	
Family Households	3,937	23.30%	29,295	36.92%	85,652	48.92%
Nonfamily Households	12,959	76.70%	50,058	63.08%	89,441	51.08%
2010 Group Quarters Population	4,695		13,171		37,213	
2010 Hispanic or Latino Households	2,152		17,085		46,547	
2010 Households by Household Size	16,895		79,353		175,093	

Pop-Facts Demographics - Pop-Facts Census Demographic Overview

Description	1789 STATE ST, SAN DIEGO, CA, 92101-2530: Radius Analysis Area Group: Radius 1.0 mile(s)		1789 STATE ST, SAN DIEGO, CA, 92101-2530: Radius Analysis Area Group: Radius 3.0 mile(s)		1789 STATE ST, SAN DIEGO, CA, 92101-2530: Radius Analysis Area Group: Radius 5.0 mile(s)	
	Total	%	Total	%	Total	%



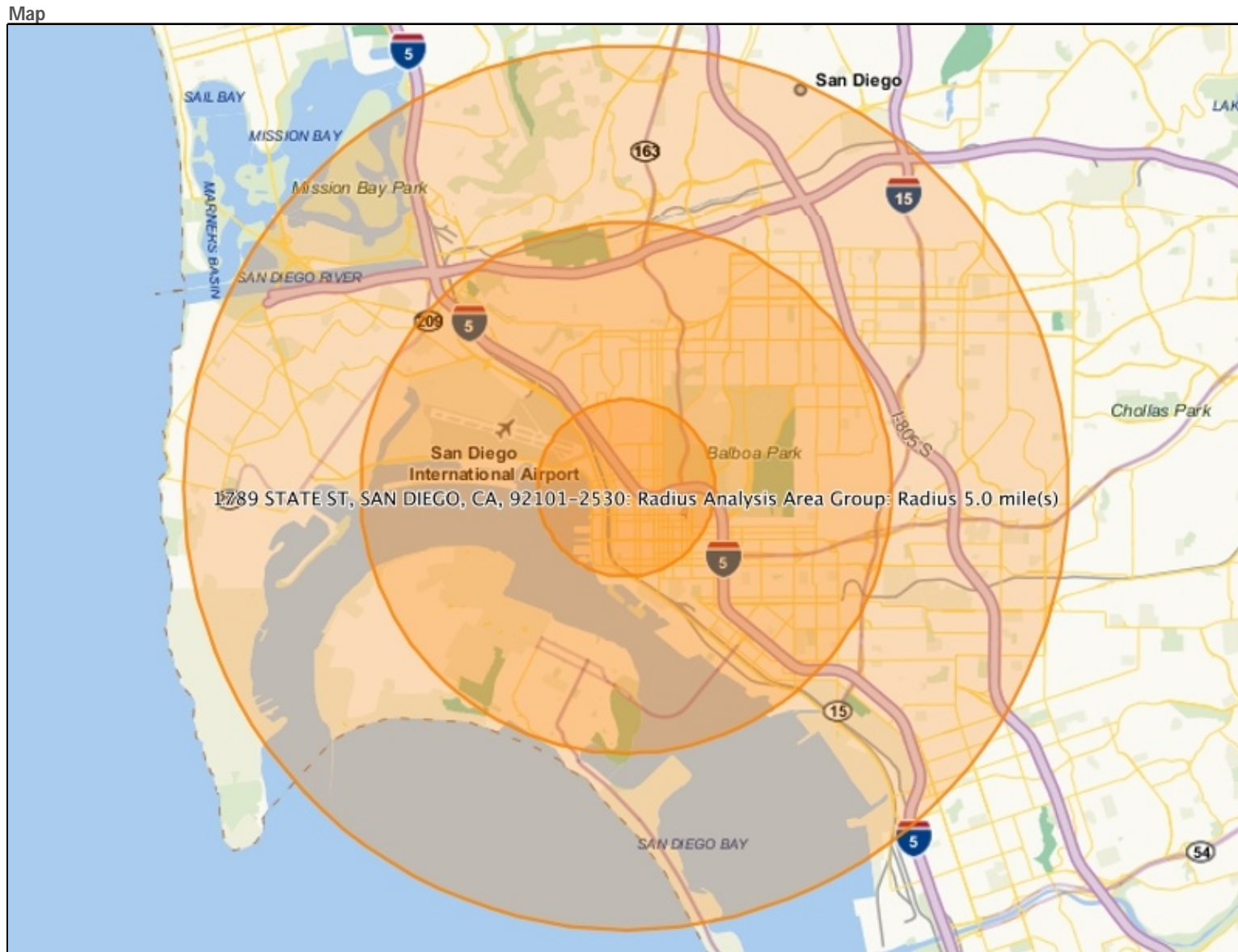
■ 1789 STATE ST, SAN DIEGO, CA, 92101-2530: Radius Analysis Area Group: Radius 1.0 mile(s)
■ 1789 STATE ST, SAN DIEGO, CA, 92101-2530: Radius Analysis Area Group: Radius 3.0 mile(s)
■ 1789 STATE ST, SAN DIEGO, CA, 92101-2530: Radius Analysis Area Group: Radius 5.0 mile(s)

1-person	10,347	61.24%	36,716	46.27%	63,555	36.30%
2-person	5,332	31.56%	25,832	32.55%	54,431	31.09%
3-person	834	4.94%	7,616	9.60%	22,118	12.63%
4-person	272	1.61%	4,823	6.08%	16,398	9.37%
5-person	72	0.43%	2,177	2.74%	9,082	5.19%
6-person	23	0.14%	1,081	1.36%	4,588	2.62%
7-or-more-person	14	0.08%	1,108	1.40%	4,922	2.81%
2010 Households by Type by Presence of Children	16,895		79,353		175,093	
2010 Fam HHs, Own Kids, Married Couple Fam	504	2.98%	7,512	9.47%	25,098	14.33%
2010 Fam HHs, Own Kids, Other Fam HH, Male HHldr	94	0.56%	1,268	1.60%	4,049	2.31%
2010 Fam HHs, Own Kids, Other Fam HH, Female HHldr	182	1.08%	3,380	4.26%	11,453	6.54%
2010 Fam HHs, No Own Kids, Married Couple Fam	2,694	15.95%	12,630	15.92%	30,819	17.60%
2010 Fam HHs, No Own Kids, Other Fam HH, Male HHldr	181	1.07%	1,558	1.96%	4,904	2.80%
2010 Fam HHs, No Own Kids, Other Fam HH, Female HHldr	280	1.66%	2,946	3.71%	9,328	5.33%
2010 NonFam HHs	12,959	76.70%	50,058	63.08%	89,441	51.08%
2010 Households by Presence of People Under Age 18	16,895		79,353		175,093	
HHs with 1 or More People Under Age 18:	849	5.02%	13,560	17.09%	46,082	26.32%
Married-Couple Family	519	61.16%	7,972	58.79%	27,039	58.68%
Other Family, Male Householder	111	13.02%	1,488	10.98%	4,959	10.76%

Pop-Facts Demographics - Pop-Facts Census Demographic Overview

Description	1789 STATE ST, SAN DIEGO, CA, 92101-2530: Radius Analysis Area Group: Radius 1.0 mile(s)		1789 STATE ST, SAN DIEGO, CA, 92101-2530: Radius Analysis Area Group: Radius 3.0 mile(s)		1789 STATE ST, SAN DIEGO, CA, 92101-2530: Radius Analysis Area Group: Radius 5.0 mile(s)	
	Total	%	Total	%	Total	%
Other Family, Female Householder	206	24.23%	3,941	29.07%	13,612	29.54%
Nonfamily, Male Householder	8	0.89%	97	0.72%	309	0.67%
Nonfamily, Female Householder	6	0.71%	62	0.45%	163	0.35%
Households with No People Under Age 18:	16,046	94.98%	65,793	82.91%	129,011	73.68%
Married-Couple Family	2,679	16.70%	12,170	18.50%	28,879	22.38%
Other Family, Male Householder	165	1.03%	1,338	2.03%	3,994	3.10%
Other Family, Female Householder	257	1.60%	2,385	3.62%	7,169	5.56%
Nonfamily, Male Householder	7,452	46.44%	27,697	42.10%	47,911	37.14%
Nonfamily, Female Householder	5,493	46.44%	22,203	42.10%	41,058	37.14%
2010 Occupied Housing Units by Tenure	16,895		79,353		175,093	
Owner Occupied	4,508	26.68%	23,911	30.13%	58,858	33.62%
Renter Occupied	12,387	73.32%	55,442	69.87%	116,235	66.38%

Pop-Facts Demographics - Pop-Facts Census Demographic Overview



1789 STATE ST, SAN DIEGO, CA, 92101-2530

- Radius 1.0 mile(s)
- Radius 3.0 mile(s)
- Radius 5.0 mile(s)